



Marine Police



מדור שיטור ימי

"הוי עז כנמר וקל כנשר רץ כצבי וגבור כארי"



אגף המבצעים

מחלקת סיור ושיטור

מס"ר / אג"מ
 סיור / מחלקת
 ימי / שיטור / מדור
 04-8686439 :טלפון
 04-8686415 :פקס
 marine@police.gov.il :מייל
 יום שלישי 4 דצמבר 2013
 סימוכין : ש"י / 2013-293

מפרט מס' : 110/2013

מפרט : מכירה לספינה פטרול מדגם "הרקולס" מספר 99090

1. כללי

- 1.1. משטרת ישראל מעוניינת למכור ספינה פטרול מדגם "הרקולס" מספר 99090, כולל הציוד הנלווה המורכב עליה
- 1.2. הספינה תקינה ומתפקדת אך נמצאה לא כשירה לביצוע המשימות המיוחדות של השיטור ימי הישראלי.
- 1.3. ספינה זו עבדה רק 1,200 שעות.
- 1.4. הספינה הוצאה מהמים ומאוחסנת במתקן משטרת יבשה בסדנת עטרות, מהספינה פורק : ציוד הקשר, מערכות מחשוב משטרתיות, מערכות לראיית לילה ורוקן הסולר ממתקני הדלק.

2. מסמכים ישימים

- 2.1. נספח א' – צילומים של הספינה.
- 2.2. נספח ב' – שרטוטים כללים של הספינה.

3. נתונים כלליים

- 3.1. סוג כלי השיט : סירת סיירת
- 3.2. בונה : Northwind USA
- 3.3. ייצרן : Northwind USA
- 3.4. דגם : הרקולס

- 3.5. שנה : 2010
- 3.6. אורך כולל : 12.19 מטר
- 3.7. רוחב : 3.20 מטר
- 3.8. שוקע : 0.81 מטר
- 3.9. הנעה : 2 x דיזל - סילון מים
- 3.10. ספינת סיור (Northwind) 12 מטר מדגם הרקולס מיועדת לפעולות חיפוש והצלה במימי החופים.
- 3.11. הספינה לא דורגה כדי לשאת נוסעים בשכר

4. נתונים טכניים

- 4.1. הספינה מצוידת בשני מנועי דיזל Volvo Penta D9-575 שישה צילינדרים.
- 4.2. תיבות הילוכים (gearbox) ZF 305-2 0.93:1 בין כל מנוע ושתי מערכות הנעת סילון המילטון גט HJ292 הקשורות אליו.
- 4.3. גנרטור דיזל Cummins Onan 11MDKBN שיש לו מערכת קירור מים סגורה , מספק 11 KW of 220VAC 50 Hz חשמל בשביל המזגנים , מטעני מצברים , משאבת טבילה 220v , שקעים בתא הצוות ובתא הגאי ומערכת אנטי פאוולינג. להדגיש: הגנרטור פורק, הותקן ועובד בספינה אחרת, עם קביעת זוכה יוחזר ויותקן במצב תקין בספינה.
- 4.4. אורך כולל : 12.19 מ'
- 4.5. אורך (מעל מתכת) : 11.89 מ'
- 4.6. אורכו של קו המים : 10.26 מ'
- 4.7. רוחב מרבי : 3.68 מ'
- 4.8. רוחב : 3.20 מ'
- 4.9. מרכז כובד, קדימה מעצה : 4.14 מ'
- 4.10. גובה מעל קו המים עם תורן ואנטנה : 6.99 מ'
- 4.11. גובה מעל קו המים עם תורן, בלי אנטנה : 5.56 מ'
- 4.12. גובה מעל קו המים, ללא תורן : 3.68 מ'
- 4.13. Deadrise (זווית באמצע האונייה) : 23 מעלות
- 4.14. שוקע דחי קל : 0.74 מ'

- 4.15. שוקע דחי מלא : 0.81 מ'
- 4.16. משקל דחי קל : 11,800 ק"ג (25,960 ליברות)
- 4.17. משקל דחי מלא : 13,000 ק"ג (28,600 ליברות)
- 4.18. (יכולת נשיאה סה"כ) משקל עצמי 2000 ק"ג (4408 ליברות) :
- 4.19. דלק מומלץ : # 2 דיזל
- 4.20. קיבולת דלק : 1200 (316 גלון) כ - 1000 (2200 ליברות)
- 4.21. מטען מורשה (כולל אנשים) : 1135 ק"ג (2500 ליברות)
- 4.22. צוות מינימום : 2 אנשים
- 4.23. קיבולת אנשים : 12 אנשים
- 4.24. מהירות שיוט : 2200 סל"ד, 20 קשרים.
- 4.25. מהירות המרבית (2600 סל"ד) : 30 קשרים.
- 4.26. לסירה יש D-פנדר מוקצף ודלת סולם עליית צוללים מהמים בדופן הספינה .
- 4.27. ספינת סיור 40FT- מצויידת באופן מלא עם כל האלקטרוניקה :
- 4.27.1. Deak flood lights - פנסי עבודה לסיפון
- 4.27.2. search lights jabsco 7'' - פנסי סריקה
- 4.27.3. VHF Furuno FM-2721 VHF מכשירי קשר
- 4.27.4. Nav net 3D Furuno MFD12 - מכשירי מכ"מ תווין
- 4.27.5. AIS - FA-150 Furuno - מערכת זיהוי אוטומטי
- 4.27.6. Depth Sounder Furuno DFF1 - מד עומק
- 4.27.7. Precision fluxgate heading sensor מצפן אלקטרוני/חשמלי
- PG-500
- 4.27.8. Remote display unit RD-30 - מולטי צג
- 4.27.9. Cruisar SXR12C יחידות מזגן חום קור
- 4.27.10. Chargermaster Mastervolt 60A- 2 מטעני מצברים
- 4.27.11. UltraSonic Antifouling ultra 10 - מערכת אנטיפאולינג
- 4.27.12. מערכת כיבוי אש ובקרת אש
- 4.27.13. Carbon Monoxide Detector - חיישן גז חד פחמן
- 4.27.14. Bilge pump Auto system 5 משאבות שיפוליים אוטומטיות

4.27.15. 2 משאבות שיפוליים דיאפרגמה ידניות Manual Bilge pump

4.27.16. יסופק עם הספינה גשר עילי fly bridge לא מורכב (מותאם להרכבה על הספינה) הכולל: מערכת היגוי מצערות הנעה מנוע וג'ט, לוח בקרה עבור המנועים והגטים, מערכת ניווט, מולטי צג ומצפן.

5. אחריות

5.1. הספינה מוצעת למכירה כפי שהיא במצבה הנוכחי AS IS וללא כל אחריות של משטרת ישראל לאיכותה ולרמת תקינותה ולאביזרים הנלווים המורכבים עליה.

6. בחינת הציוד

6.1. המציעים רשאים לתאם ביקור במחסני המשטרה לשם בדיקה הספינה והציוד הנלווה המורכב עליה בתנאי אחסנה.

6.2. שייט בספינה ייערך לספקים המעוניינים בכך ובלבד שרכשו את מסמכי המכרז כנדרש.

7. אספקה

7.1. משטרת ישראל תדאג להוביל את הספינה לצורך ביצוע מבחני הים.

7.2. הזוכה יידרש לאסוף את הספינה ממקום ביצוע מבחני הים או אם לא ירצה לבצע מבחני ים לאסוף את הספינה מסדנת עטרות.

7.3. כל עבודות הנפת הספינה והשינוע מהמתקן המשטרתני או ממקום ביצוע מבחני הים למתקן הזוכה, יהיו על ידי הזוכה ועל חשבונו.

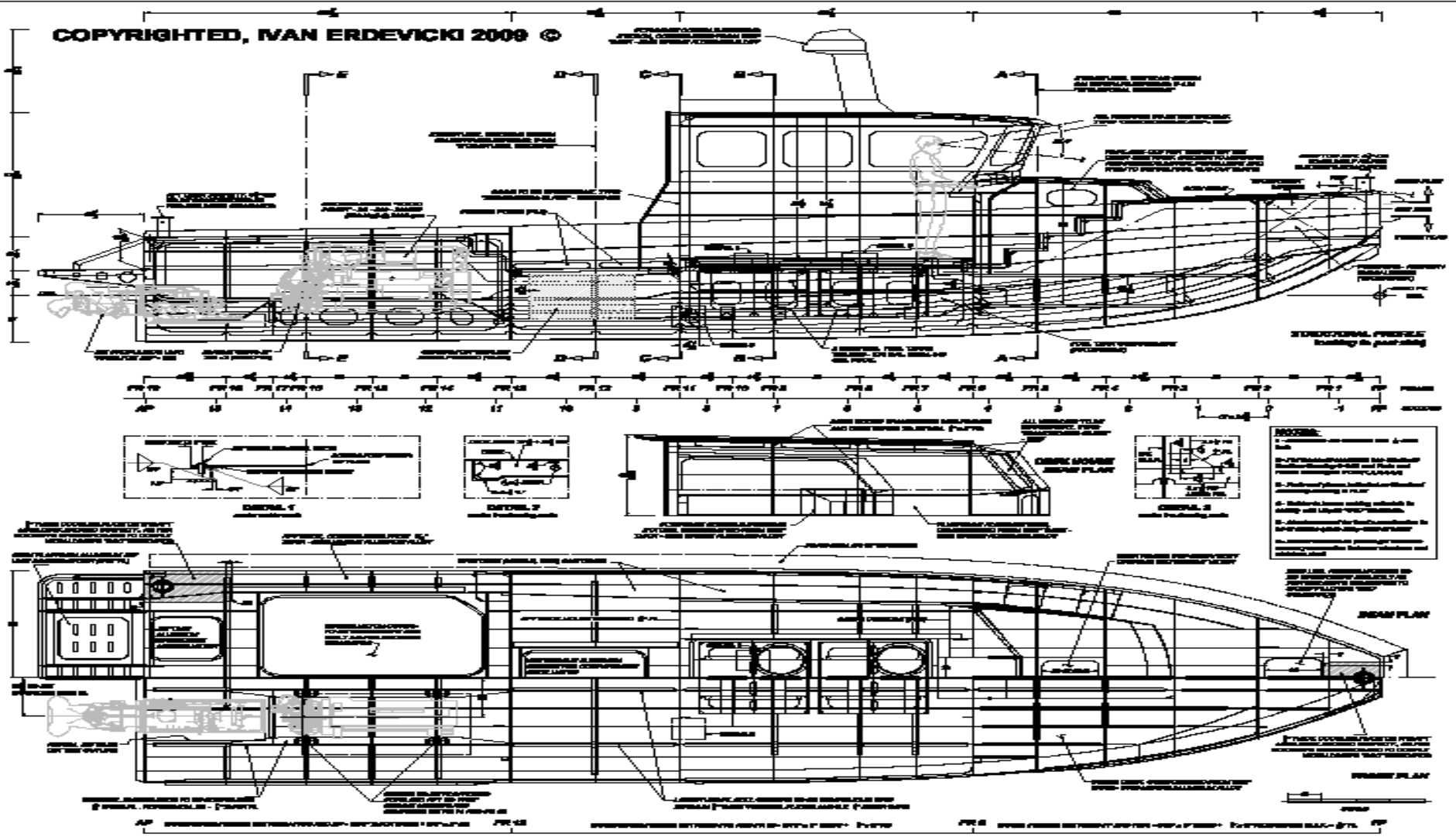
יובל משולם, פקד
מ' מספנה שיטור ימי

נספח א' – צילומים של הספינה





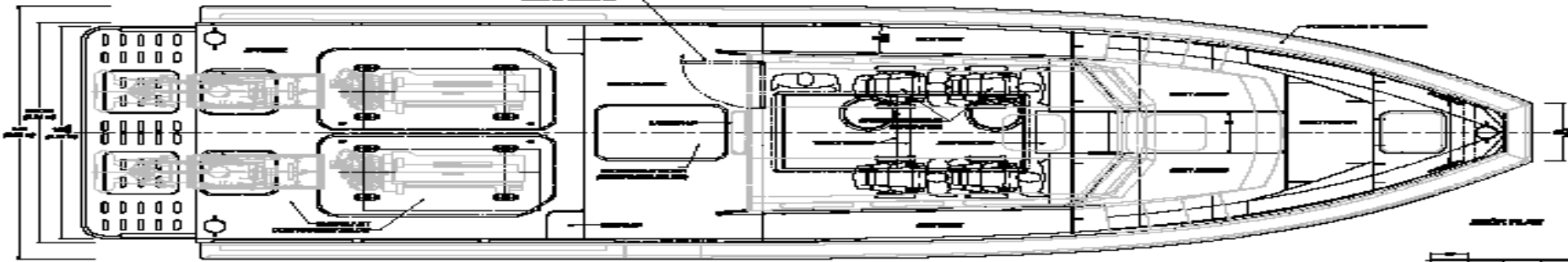
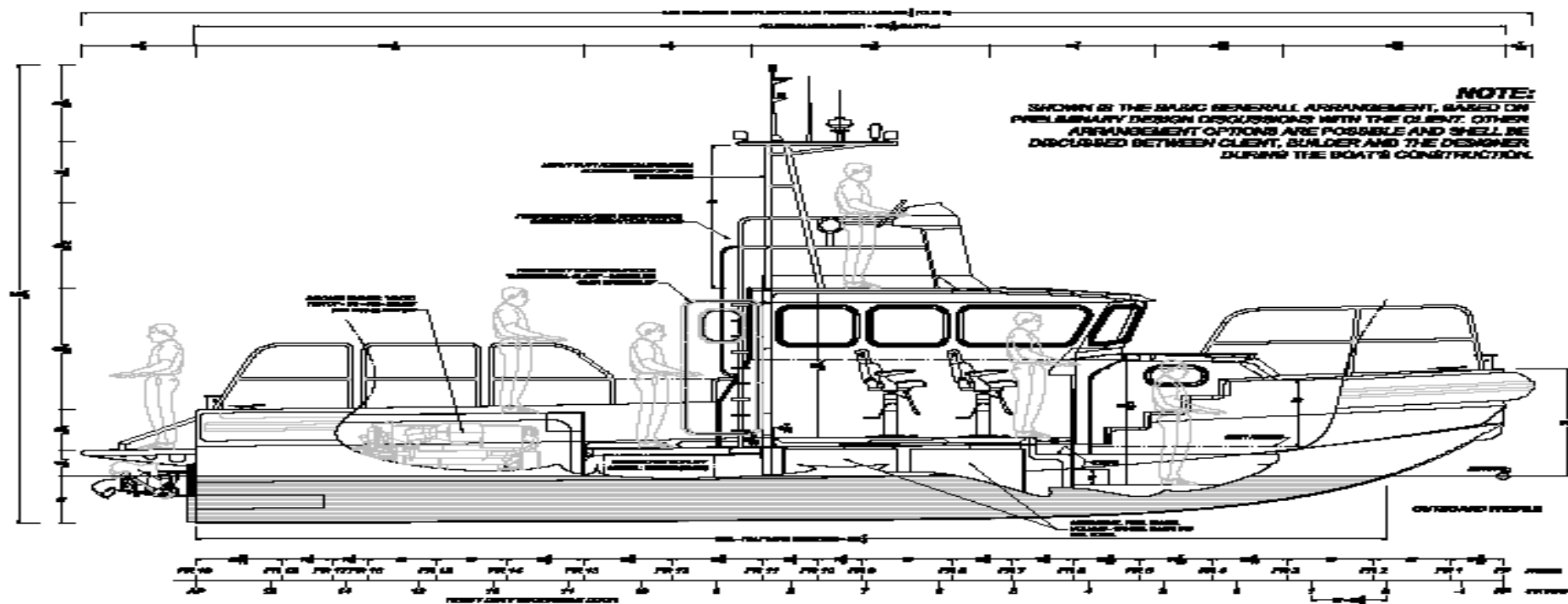
COPYRIGHTED, IAN ERDEVICKI 2009 ©



NO.	REV.	DATE	BY	CHKD.
1				
2				
3				
4				
5				
6				
7				
8				
9				
10				
11				
12				
13				
14				
15				
16				
17				
18				
19				
20				
21				
22				
23				
24				
25				
26				
27				
28				
29				
30				



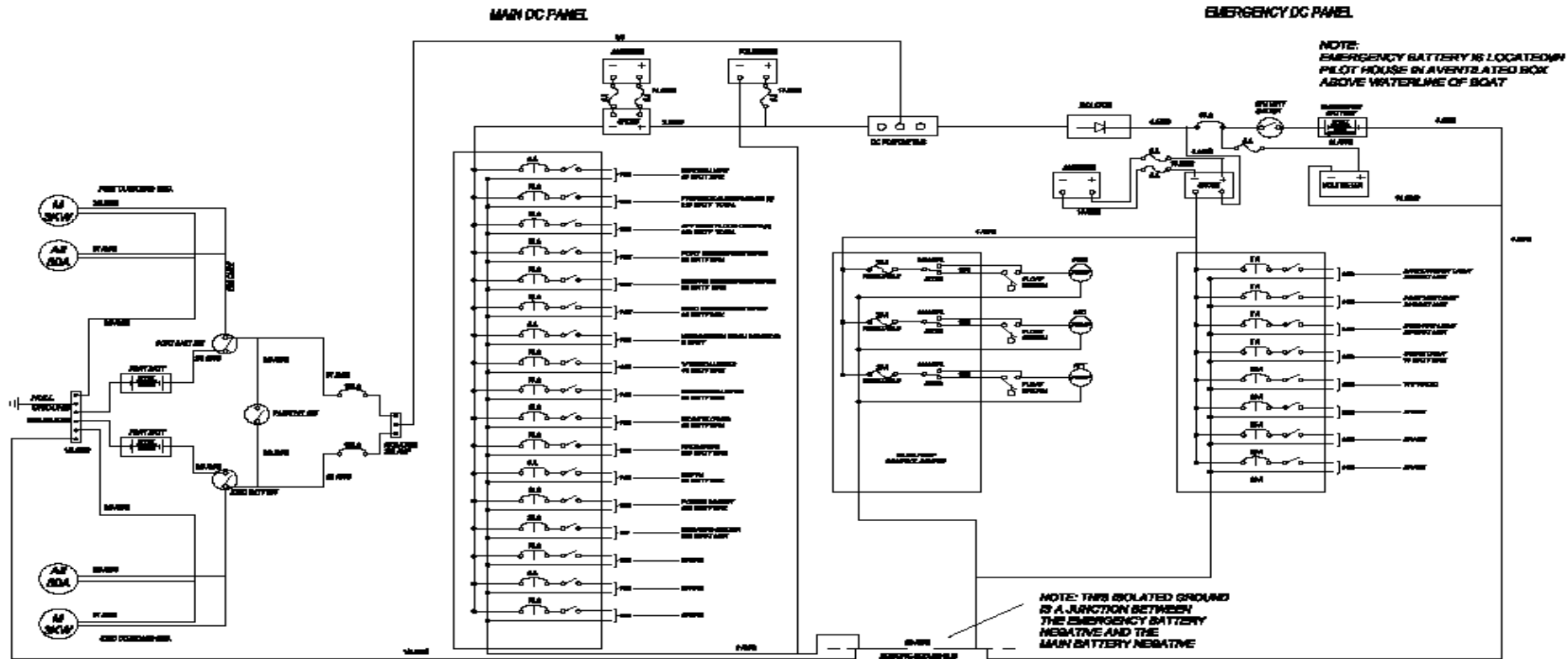
GENERAL NOTES:	
1.	ALL DIMENSIONS ARE IN METERS UNLESS OTHERWISE SPECIFIED.
2.	ALL DIMENSIONS ARE TO FACE UNLESS OTHERWISE SPECIFIED.
3.	ALL DIMENSIONS ARE TO CENTERLINE UNLESS OTHERWISE SPECIFIED.
4.	ALL DIMENSIONS ARE TO CENTERLINE UNLESS OTHERWISE SPECIFIED.
5.	ALL DIMENSIONS ARE TO CENTERLINE UNLESS OTHERWISE SPECIFIED.
6.	ALL DIMENSIONS ARE TO CENTERLINE UNLESS OTHERWISE SPECIFIED.
7.	ALL DIMENSIONS ARE TO CENTERLINE UNLESS OTHERWISE SPECIFIED.
8.	ALL DIMENSIONS ARE TO CENTERLINE UNLESS OTHERWISE SPECIFIED.
9.	ALL DIMENSIONS ARE TO CENTERLINE UNLESS OTHERWISE SPECIFIED.
10.	ALL DIMENSIONS ARE TO CENTERLINE UNLESS OTHERWISE SPECIFIED.
11.	ALL DIMENSIONS ARE TO CENTERLINE UNLESS OTHERWISE SPECIFIED.
12.	ALL DIMENSIONS ARE TO CENTERLINE UNLESS OTHERWISE SPECIFIED.
13.	ALL DIMENSIONS ARE TO CENTERLINE UNLESS OTHERWISE SPECIFIED.
14.	ALL DIMENSIONS ARE TO CENTERLINE UNLESS OTHERWISE SPECIFIED.
15.	ALL DIMENSIONS ARE TO CENTERLINE UNLESS OTHERWISE SPECIFIED.
16.	ALL DIMENSIONS ARE TO CENTERLINE UNLESS OTHERWISE SPECIFIED.
17.	ALL DIMENSIONS ARE TO CENTERLINE UNLESS OTHERWISE SPECIFIED.
18.	ALL DIMENSIONS ARE TO CENTERLINE UNLESS OTHERWISE SPECIFIED.
19.	ALL DIMENSIONS ARE TO CENTERLINE UNLESS OTHERWISE SPECIFIED.
20.	ALL DIMENSIONS ARE TO CENTERLINE UNLESS OTHERWISE SPECIFIED.
21.	ALL DIMENSIONS ARE TO CENTERLINE UNLESS OTHERWISE SPECIFIED.
22.	ALL DIMENSIONS ARE TO CENTERLINE UNLESS OTHERWISE SPECIFIED.
23.	ALL DIMENSIONS ARE TO CENTERLINE UNLESS OTHERWISE SPECIFIED.
24.	ALL DIMENSIONS ARE TO CENTERLINE UNLESS OTHERWISE SPECIFIED.
25.	ALL DIMENSIONS ARE TO CENTERLINE UNLESS OTHERWISE SPECIFIED.
26.	ALL DIMENSIONS ARE TO CENTERLINE UNLESS OTHERWISE SPECIFIED.
27.	ALL DIMENSIONS ARE TO CENTERLINE UNLESS OTHERWISE SPECIFIED.
28.	ALL DIMENSIONS ARE TO CENTERLINE UNLESS OTHERWISE SPECIFIED.
29.	ALL DIMENSIONS ARE TO CENTERLINE UNLESS OTHERWISE SPECIFIED.
30.	ALL DIMENSIONS ARE TO CENTERLINE UNLESS OTHERWISE SPECIFIED.



COPYRIGHTED, IVAN ERDEVICKI 2009 ©

NO.	REV.	DATE	BY	CHKD.

DC-SCHEMATIC DRAWING IS PREPARED WITHOUT TAKING INTO CONSIDERATION THE GENERATOR - THIS DRAWING TO BE REVIEWED, UPDATED AND / OR MODIFIED BY THE BUILDER BEFORE SENDING IT FOR APPROVAL TO LLOYD'S



NO.	REV.	DATE	BY
1	1		
2	1		
3	1		
4	1		
5	1		
6	1		
7	1		
8	1		
9	1		
10	1		
11	1		
12	1		
13	1		
14	1		
15	1		
16	1		
17	1		
18	1		
19	1		
20	1		

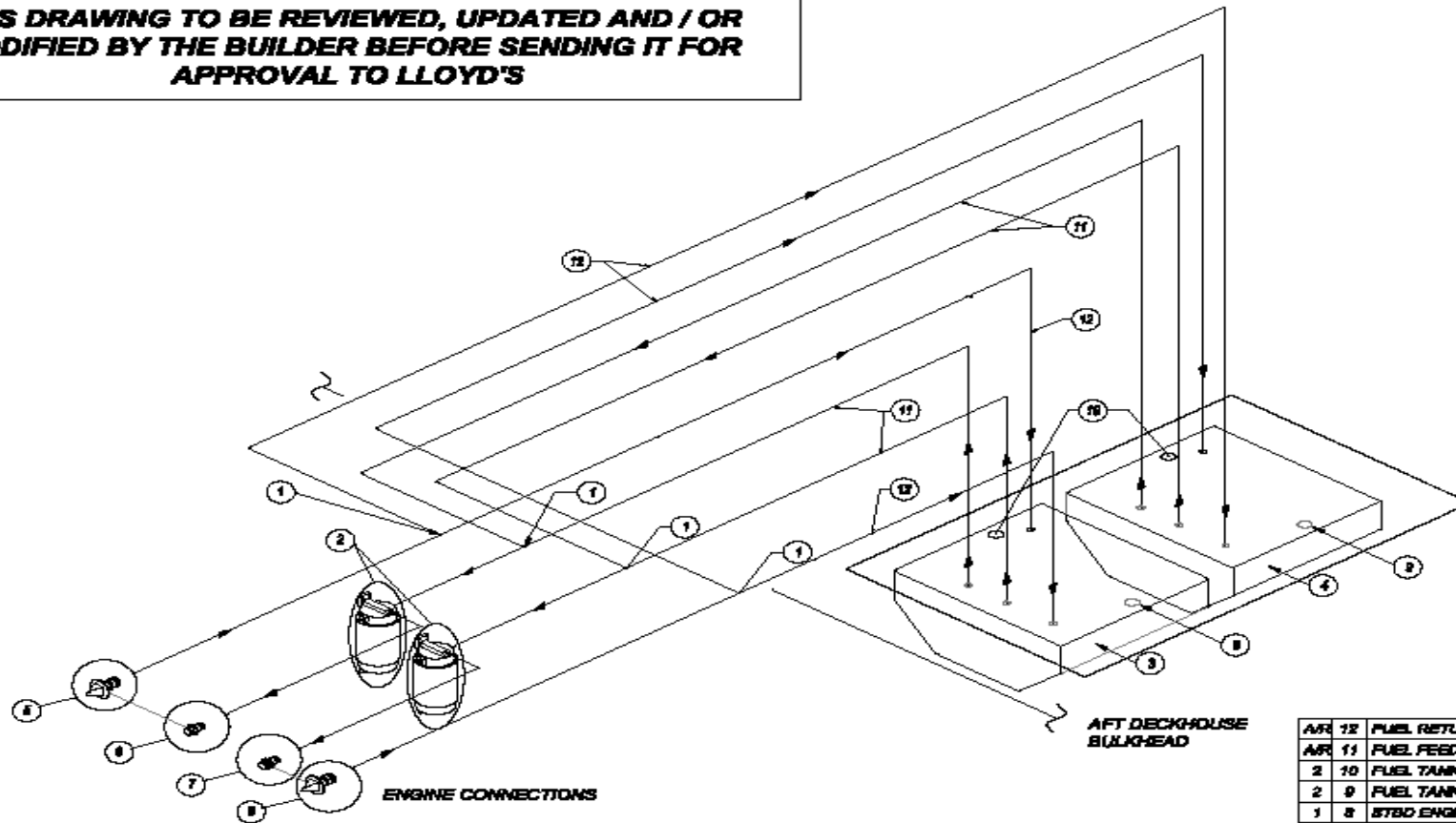


COPYRIGHTED, IVAN ERDEVICKI 2009 ©

1.25	40 AMP (16.00A)
1.50	50 AMP (20.00A)
2.00	60 AMP (24.00A)
2.50	75 AMP (30.00A)

NO.	REV.	DATE	BY
1	1		
2	1		
3	1		
4	1		
5	1		
6	1		
7	1		
8	1		
9	1		
10	1		
11	1		
12	1		
13	1		
14	1		
15	1		
16	1		
17	1		
18	1		
19	1		
20	1		

**THIS DRAWING TO BE REVIEWED, UPDATED AND / OR
MODIFIED BY THE BUILDER BEFORE SENDING IT FOR
APPROVAL TO LLOYD'S**



AW	12	FUEL RETURN HOSE 1/2"
AW	11	FUEL FEED HOSE 3/8"
	2	FUEL TANK VENT
	2	FUEL TANK FILL
	1	STBD ENGINE FUEL RETURN UNION
	1	STBD ENGINE FUEL FEED UNION
	1	PORT ENGINE FUEL FEED UNION
	1	PORT ENGINE FUEL RETURN UNION
	1	FORWARD MAIN FUEL TANK
	1	AFT MAIN FUEL TANK
	2	RACOR FUEL FILTER
	4	3 POSITION VALVE
QTY	ITEM	DESCRIPTION
NO.	NO.	

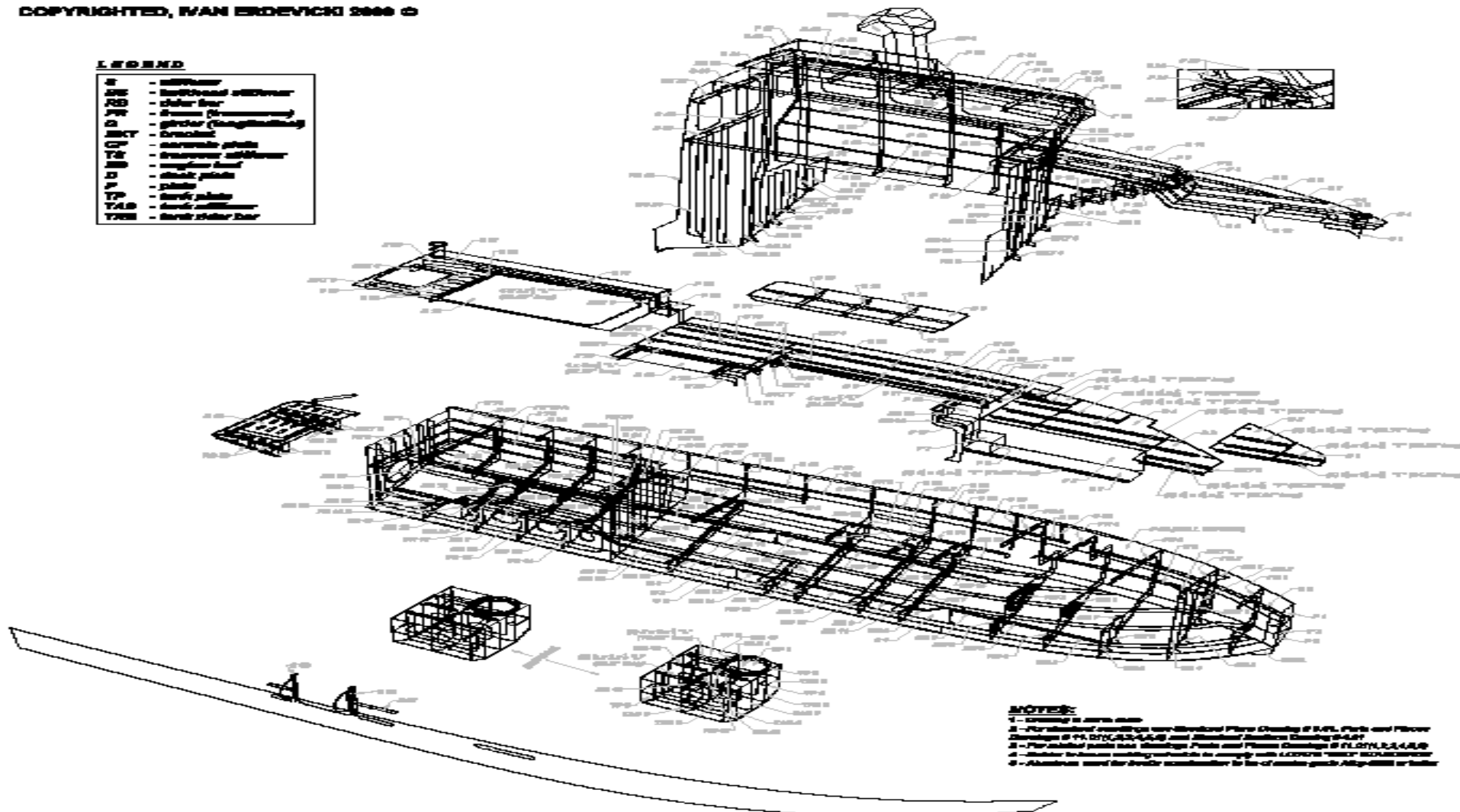
NO.	DATE	BY	CHKD.	APP.



COPYRIGHTED, IVAN ERDEVICKI 2009 ©

LEGEND

W	- wall/beam
AW	- backward wall/beam
RS	- rafter bar
TR	- truss (crossway)
CS	- girder (longitudinal)
RECT	- rectangle
CP	- corner plate
TR	- truss/beam wall/beam
SB	- support beam
W	- steel plate
Y	- plate
TR	- truss plate
TRB	- truss rafter bar



NOTES:
 1 - Drawing is done with
 2 - For material quantities see Structural Plans Drawing of S.P.L. Plans and Floor
 Drawings of 111, 121, 131, 141, 151 and Structural Details Drawing S-1, S-2
 3 - For material parts see Structural Parts and Plates Drawing of 111, 121, 131, 141, 151
 4 - Studs between walling supports to comply with LOCAL "BEST" REQUIREMENTS
 5 - Aluminum used for rivets recommended by the manufacturer for the material used for rivets

NO.	REV.	DATE	BY	CHKD.

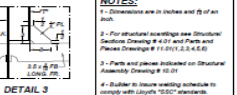
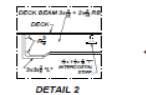
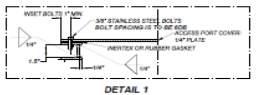
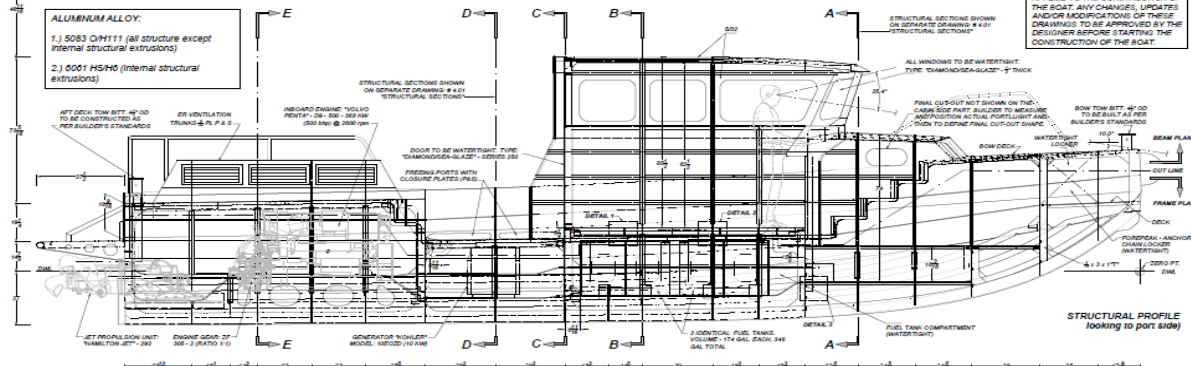


NO.	REV.	DATE	BY	CHKD.

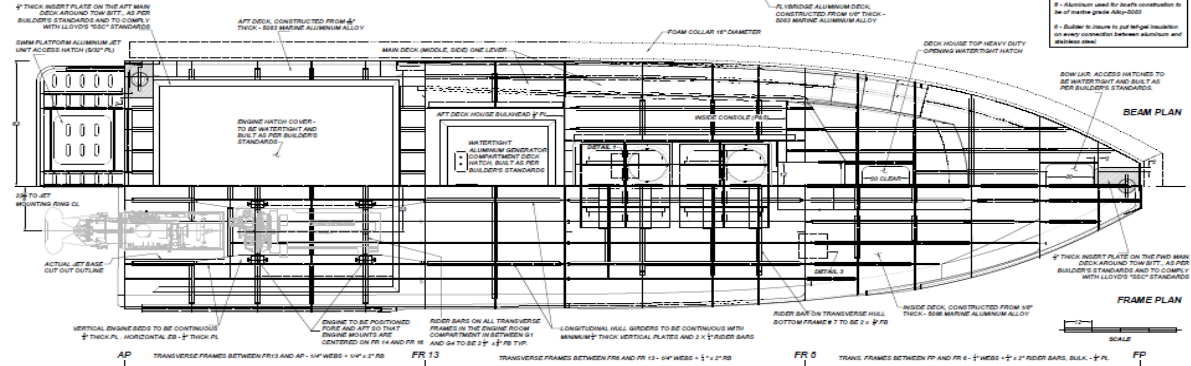
COPYRIGHTED, IVAN ERDEVICKI 2010 ©

ALUMINUM ALLOY:
 1.) 5083 OH111 (all structure except internal structural extrusions)
 2.) 0001 H5/H6 (internal structural extrusions)

NOTE:
 DRAWINGS TO BE REVISED AND VERIFIED BY THE BUILDER BEFORE APPLIED TO THE CONSTRUCTION OF THE BOAT. ANY CHANGES, UPDATES AND/OR MODIFICATIONS OF THESE DRAWINGS TO BE APPROVED BY THE DESIGNER BEFORE STARTING THE CONSTRUCTION OF THE BOAT.



NOTES:
 1 - Dimensions are in inches and ft of an inch.
 2 - For structural steelings see Structural Details Drawing # 430 and Plans and Plates Drawing # 11 (11.1, 11.4, 11.5, 11.6).
 3 - Parts and pieces indicated on Structural Assembly Drawing # 11.01.
 4 - Builder to insure welding schedule to comply with Lloyd's "550" standards.
 5 - Aluminum used for shaft construction is to be marine grade Al-6061.
 6 - Builder to insure to put proper insulation to avoid contact between aluminum and stainless steel.



NO.	REVISION	DATE	BY	CHKD.



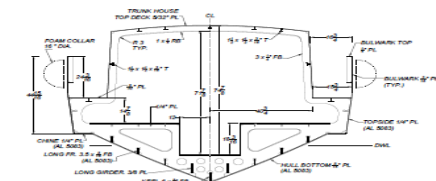
GENERAL DIMENSIONS

LOA	40' 0" (12.20 m)
BEAM	32' 0" (9.75 m)
BEAM	12' 11.25" (3.84 m)
DRAFTLINE	2' 0" (0.61 m)

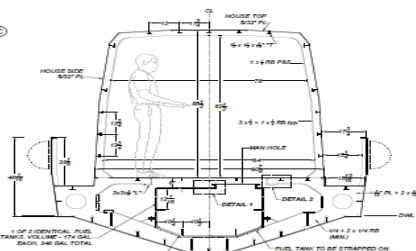
PLATE PARTIAL LIST

NO.	DESCRIPTION	DATE	BY	CHKD.

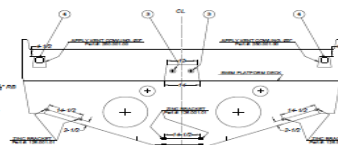
COPYRIGHTED, IVAN ERDEVICKI 2010 ©



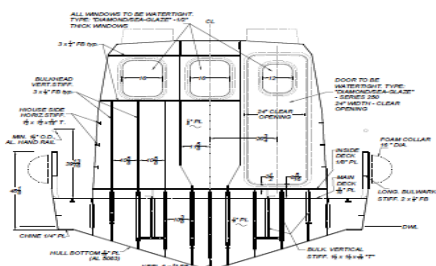
SECTION A-A (FR 5)
LOOKING AFT
Scale drawing scale



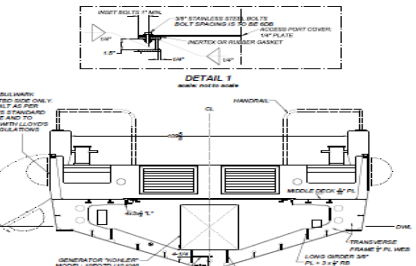
SECTION B-B (FR 9)
LOOKING AFT
Scale drawing scale



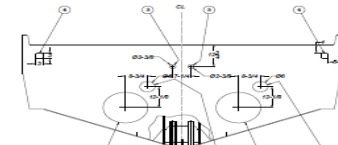
TRANSOM
LOOKING FORWARD



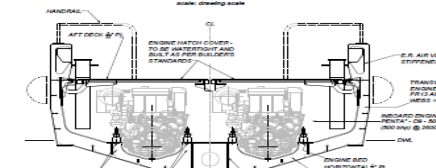
SECTION C-C (FR 11)
LOOKING AFT
Scale drawing scale



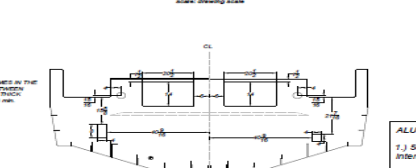
SECTION D-D (FR 12)
LOOKING AFT
Scale drawing scale



TRANSOM
LOOKING FORWARD

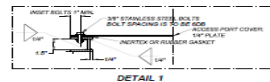


SECTION E-E (FR 16)
LOOKING AFT
Scale drawing scale

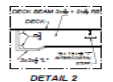


FRAME 13 (BULK PENETRATIONS)
LOOKING AFT

NOTE:
DRAWINGS TO BE REVISED AND
VERIFIED BY THE BUILDER BEFORE
APPLIED TO THE CONSTRUCTION OF
THE BOAT. ANY CHANGES, UPDATES
AND/OR MODIFICATIONS OF THESE
DRAWINGS TO BE APPROVED BY THE
DESIGNER BEFORE STARTING THE
CONSTRUCTION OF THE BOAT.



DETAIL 1
Scale drawing scale



DETAIL 2
Scale drawing scale

NOTES:
1. Dimensions are in inches and up of an inch.
2. For structural capabilities see Structural Plate Drawing # 101 and Plate and Flange Drawing # 101012.1.1.1.1.1.
3. Plate and plate attached on Structural Assembly Drawing # 1011.
4. Material to insure welding schedule to comply with AWS's "ECC" standards.
5. Minimum loads for bulkhead shown in the drawing are 1000 lbs. (4500 N).
6. Builder to insure to put proper insulation on every connection between aluminum and stainless steel.

ALUMINUM ALLOY:
1.) 5083 Q19111 (all structure except internal structural extrusions)
2.) 6061 T5/T6 (internal structural extrusions)

REVISIONS	
NO.	DESCRIPTION

Ivan Erdevicki
DESIGNER

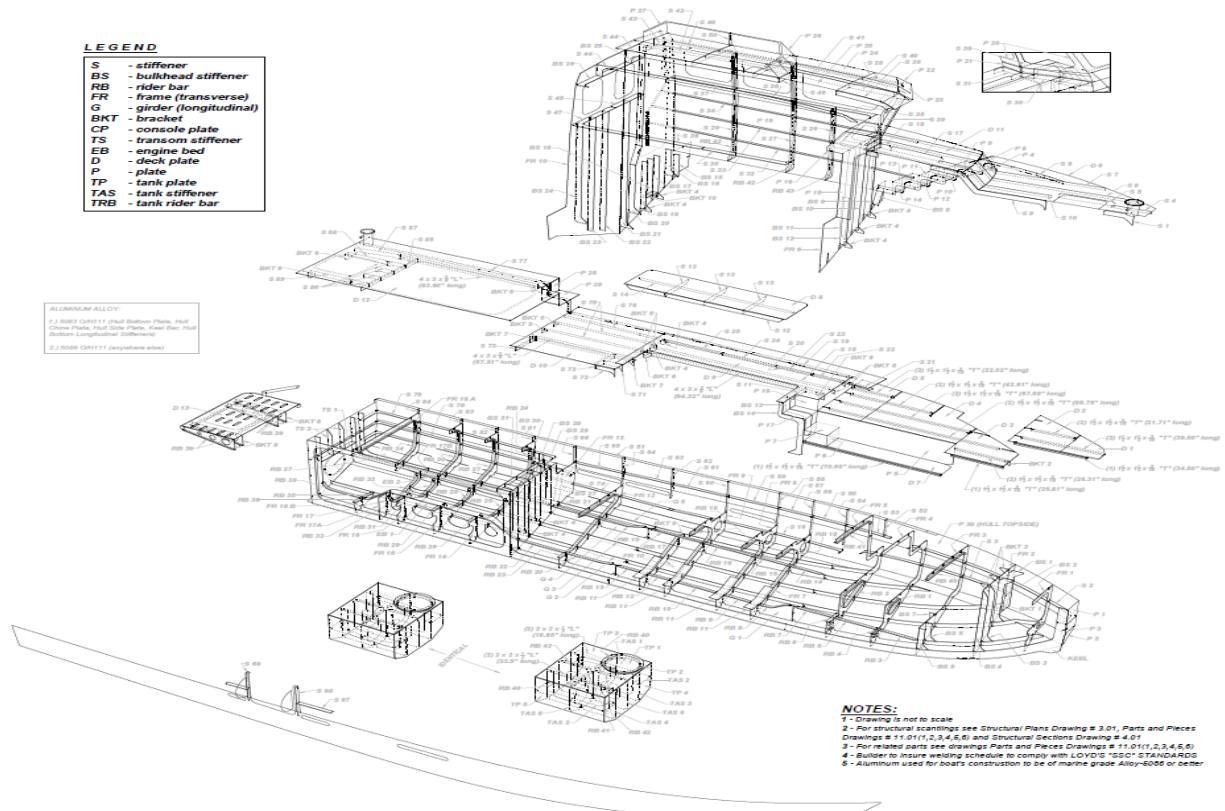
PRINCIPAL DIMENSIONS	
LOA	40' 10" (1252 mm)
BEAM	33' 0" (1006 mm)
DEPTH	12' 0" (3658 mm)
DRAFT	2' 0" (610 mm)

PLATE MATERIAL	
PLATE	5083 Q19111
FLANGE	5083 Q19111
WELD	6061 T5/T6
INSULATION	

LEGEND

- S - stiffener
- BS - bulkhead stiffener
- RB - rider bar
- FR - frame (transverse)
- G - girder (longitudinal)
- BKT - bracket
- CP - console plate
- TS - transom stiffener
- EB - engine bed
- D - deck plate
- P - plate
- TP - tank plate
- TAS - tank stiffener
- TRB - tank rider bar

ALUMINUM ALLOY:
 6.1 6061 GR70 T1 Small Section Plate, Sheet
 6.2 6061 GR70 T1 1/4" Thick Plate, Cold Chk. Flat
 6.3 6061 GR70 T1 1/4" Thick Plate, Cold Chk. Flat
 6.4 6061 GR70 T1 1/4" Thick Plate, Cold Chk. Flat
 6.5 6061 GR70 T1 1/4" Thick Plate, Cold Chk. Flat
 6.6 6061 GR70 T1 1/4" Thick Plate, Cold Chk. Flat
 6.7 6061 GR70 T1 1/4" Thick Plate, Cold Chk. Flat
 6.8 6061 GR70 T1 1/4" Thick Plate, Cold Chk. Flat
 6.9 6061 GR70 T1 1/4" Thick Plate, Cold Chk. Flat
 6.10 6061 GR70 T1 1/4" Thick Plate, Cold Chk. Flat
 6.11 6061 GR70 T1 1/4" Thick Plate, Cold Chk. Flat
 6.12 6061 GR70 T1 1/4" Thick Plate, Cold Chk. Flat
 6.13 6061 GR70 T1 1/4" Thick Plate, Cold Chk. Flat
 6.14 6061 GR70 T1 1/4" Thick Plate, Cold Chk. Flat
 6.15 6061 GR70 T1 1/4" Thick Plate, Cold Chk. Flat
 6.16 6061 GR70 T1 1/4" Thick Plate, Cold Chk. Flat
 6.17 6061 GR70 T1 1/4" Thick Plate, Cold Chk. Flat
 6.18 6061 GR70 T1 1/4" Thick Plate, Cold Chk. Flat
 6.19 6061 GR70 T1 1/4" Thick Plate, Cold Chk. Flat
 6.20 6061 GR70 T1 1/4" Thick Plate, Cold Chk. Flat
 6.21 6061 GR70 T1 1/4" Thick Plate, Cold Chk. Flat
 6.22 6061 GR70 T1 1/4" Thick Plate, Cold Chk. Flat
 6.23 6061 GR70 T1 1/4" Thick Plate, Cold Chk. Flat
 6.24 6061 GR70 T1 1/4" Thick Plate, Cold Chk. Flat
 6.25 6061 GR70 T1 1/4" Thick Plate, Cold Chk. Flat
 6.26 6061 GR70 T1 1/4" Thick Plate, Cold Chk. Flat
 6.27 6061 GR70 T1 1/4" Thick Plate, Cold Chk. Flat
 6.28 6061 GR70 T1 1/4" Thick Plate, Cold Chk. Flat
 6.29 6061 GR70 T1 1/4" Thick Plate, Cold Chk. Flat
 6.30 6061 GR70 T1 1/4" Thick Plate, Cold Chk. Flat
 6.31 6061 GR70 T1 1/4" Thick Plate, Cold Chk. Flat
 6.32 6061 GR70 T1 1/4" Thick Plate, Cold Chk. Flat
 6.33 6061 GR70 T1 1/4" Thick Plate, Cold Chk. Flat
 6.34 6061 GR70 T1 1/4" Thick Plate, Cold Chk. Flat
 6.35 6061 GR70 T1 1/4" Thick Plate, Cold Chk. Flat
 6.36 6061 GR70 T1 1/4" Thick Plate, Cold Chk. Flat
 6.37 6061 GR70 T1 1/4" Thick Plate, Cold Chk. Flat
 6.38 6061 GR70 T1 1/4" Thick Plate, Cold Chk. Flat
 6.39 6061 GR70 T1 1/4" Thick Plate, Cold Chk. Flat
 6.40 6061 GR70 T1 1/4" Thick Plate, Cold Chk. Flat
 6.41 6061 GR70 T1 1/4" Thick Plate, Cold Chk. Flat
 6.42 6061 GR70 T1 1/4" Thick Plate, Cold Chk. Flat
 6.43 6061 GR70 T1 1/4" Thick Plate, Cold Chk. Flat
 6.44 6061 GR70 T1 1/4" Thick Plate, Cold Chk. Flat
 6.45 6061 GR70 T1 1/4" Thick Plate, Cold Chk. Flat
 6.46 6061 GR70 T1 1/4" Thick Plate, Cold Chk. Flat
 6.47 6061 GR70 T1 1/4" Thick Plate, Cold Chk. Flat
 6.48 6061 GR70 T1 1/4" Thick Plate, Cold Chk. Flat
 6.49 6061 GR70 T1 1/4" Thick Plate, Cold Chk. Flat
 6.50 6061 GR70 T1 1/4" Thick Plate, Cold Chk. Flat
 6.51 6061 GR70 T1 1/4" Thick Plate, Cold Chk. Flat
 6.52 6061 GR70 T1 1/4" Thick Plate, Cold Chk. Flat
 6.53 6061 GR70 T1 1/4" Thick Plate, Cold Chk. Flat
 6.54 6061 GR70 T1 1/4" Thick Plate, Cold Chk. Flat
 6.55 6061 GR70 T1 1/4" Thick Plate, Cold Chk. Flat
 6.56 6061 GR70 T1 1/4" Thick Plate, Cold Chk. Flat
 6.57 6061 GR70 T1 1/4" Thick Plate, Cold Chk. Flat
 6.58 6061 GR70 T1 1/4" Thick Plate, Cold Chk. Flat
 6.59 6061 GR70 T1 1/4" Thick Plate, Cold Chk. Flat
 6.60 6061 GR70 T1 1/4" Thick Plate, Cold Chk. Flat
 6.61 6061 GR70 T1 1/4" Thick Plate, Cold Chk. Flat
 6.62 6061 GR70 T1 1/4" Thick Plate, Cold Chk. Flat
 6.63 6061 GR70 T1 1/4" Thick Plate, Cold Chk. Flat
 6.64 6061 GR70 T1 1/4" Thick Plate, Cold Chk. Flat
 6.65 6061 GR70 T1 1/4" Thick Plate, Cold Chk. Flat
 6.66 6061 GR70 T1 1/4" Thick Plate, Cold Chk. Flat
 6.67 6061 GR70 T1 1/4" Thick Plate, Cold Chk. Flat
 6.68 6061 GR70 T1 1/4" Thick Plate, Cold Chk. Flat
 6.69 6061 GR70 T1 1/4" Thick Plate, Cold Chk. Flat
 6.70 6061 GR70 T1 1/4" Thick Plate, Cold Chk. Flat
 6.71 6061 GR70 T1 1/4" Thick Plate, Cold Chk. Flat
 6.72 6061 GR70 T1 1/4" Thick Plate, Cold Chk. Flat
 6.73 6061 GR70 T1 1/4" Thick Plate, Cold Chk. Flat
 6.74 6061 GR70 T1 1/4" Thick Plate, Cold Chk. Flat
 6.75 6061 GR70 T1 1/4" Thick Plate, Cold Chk. Flat
 6.76 6061 GR70 T1 1/4" Thick Plate, Cold Chk. Flat
 6.77 6061 GR70 T1 1/4" Thick Plate, Cold Chk. Flat
 6.78 6061 GR70 T1 1/4" Thick Plate, Cold Chk. Flat
 6.79 6061 GR70 T1 1/4" Thick Plate, Cold Chk. Flat
 6.80 6061 GR70 T1 1/4" Thick Plate, Cold Chk. Flat
 6.81 6061 GR70 T1 1/4" Thick Plate, Cold Chk. Flat
 6.82 6061 GR70 T1 1/4" Thick Plate, Cold Chk. Flat
 6.83 6061 GR70 T1 1/4" Thick Plate, Cold Chk. Flat
 6.84 6061 GR70 T1 1/4" Thick Plate, Cold Chk. Flat
 6.85 6061 GR70 T1 1/4" Thick Plate, Cold Chk. Flat
 6.86 6061 GR70 T1 1/4" Thick Plate, Cold Chk. Flat
 6.87 6061 GR70 T1 1/4" Thick Plate, Cold Chk. Flat
 6.88 6061 GR70 T1 1/4" Thick Plate, Cold Chk. Flat
 6.89 6061 GR70 T1 1/4" Thick Plate, Cold Chk. Flat
 6.90 6061 GR70 T1 1/4" Thick Plate, Cold Chk. Flat
 6.91 6061 GR70 T1 1/4" Thick Plate, Cold Chk. Flat
 6.92 6061 GR70 T1 1/4" Thick Plate, Cold Chk. Flat
 6.93 6061 GR70 T1 1/4" Thick Plate, Cold Chk. Flat
 6.94 6061 GR70 T1 1/4" Thick Plate, Cold Chk. Flat
 6.95 6061 GR70 T1 1/4" Thick Plate, Cold Chk. Flat
 6.96 6061 GR70 T1 1/4" Thick Plate, Cold Chk. Flat
 6.97 6061 GR70 T1 1/4" Thick Plate, Cold Chk. Flat
 6.98 6061 GR70 T1 1/4" Thick Plate, Cold Chk. Flat
 6.99 6061 GR70 T1 1/4" Thick Plate, Cold Chk. Flat
 7.00 6061 GR70 T1 1/4" Thick Plate, Cold Chk. Flat



- NOTES:**
- 1 - Drawing is not to scale
 - 2 - For structural scantlings see Structural Plans Drawing # 3.01, Parts and Pieces Drawings # 11.0111, 2, 3, 4, 5, 6, 7 and Structural Sections Drawing # 4.01
 - 3 - For related parts see drawings Parts and Pieces Drawings # 11.0111, 2, 3, 4, 5, 6, 7
 - 4 - Builder to insure welding schedule to comply with LOYD'S "SSC" STANDARDS
 - 5 - Aluminum used for boat's construction to be of marine grade Alloy-5086 or better

Ivan Erdevicki

DESIGNER

DRAWN BY: [Signature]

CHECKED BY: [Signature]

DATE: 05/12/2009

SCALE: 1:1

PROJECT: [Project Name]

DRAWING NO: [Drawing Number]

SHEET NO: [Sheet Number]

TOTAL SHEETS: [Total Sheets]

of
Patrol Boat
“Hercules”



Statement
Marketing
model
No' 99090

מס"ר / אג"מ
סיור / מחלקת
ימי שיטור / מדור
04-8686439 : טלפון
04-8686415 : פקס
marine@police.gov.il : מייל
יום שלישי 4 דצמבר 2013
סימוכין : ש"י / 293 - 2013

מפרט מס' : 110/2013

1. General

1.1 The Israeli Police is interested in selling a portal boat , model: "Hercules" 99090, including the equipment that has been installed

on the boat.

1.2 The boat functions properly but is not qualified for Israel's Marine Police's special tasks and missions.

1.3 This vessel has worked 1,200 hours only.

1.4 The boat has been taken out of the water , and is stored in a police facility in Jerusalem. Equipment that has been uninstalled from the boat: police computer systems and night vision systems . The fuel tanks have been emptied.

2. Reference Documents :

2.1 Appendix A - Photographs of the boat

2.2 Appendix B -General Drawings of the boat

3. General Data:

- 3.1 **Vessel Type:** Patrol Boat
- 3.2 **Builder:** NorthWind Marine
- 3.3 **Make:** NorthWind Marine
- 3.4 **Model:** Hercules
- 3.5 **Year:** 2010
- 3.6 **Length Overall:** 12.19m
- 3.7 **Beam:** 3' 20"
- 3.8 **Draft:** 0.81m
- 3.9 **Engine(s):** 2 x Diesel - Water jet.

3.10 The Northwind 12 Meter Hercules Patrol Boat is designed for search and rescue operations in coastal waters.

3.11 The vessel is not rated to carry passengers for hire.

4. Technical Data

4.1 The boat is equipped with two Volvo Penta D9-575 in line six cylinder diesel engines.

4.2 There is a ZF 305-2 0.93:1 gearbox between each engine and its two Hamilton HJ292 associated jets.

4.3 The Cummins Onan 11MDKBN diesel generator set, which has its own water tight compartment, supplies 11 KW of 220VAC 50 Hz power for the air conditioners, battery chargers, dewatering pump outlet, outlets in the cuddy, house, and cockpit, and the ultrasonic antifouling system. **Note:** The generator was uninstalled ,and has been installed and works on another boat, with the bid winners determination it will be returned and installed in good working order on the boat.

4.4 Length Overall (LOA): 12.19 m (480 in)

4.5 Length (Over Metal): 11.89 m (468 in)

4.6 Length of the Waterline: 10.26 m (404 in)

4.7 Maximum Beam: 3.68 m (145 in).

4.8 Beam: 3.20 m (126 in)

4.9 Center of gravity, forward from transom: 4.14 m (163in)

4.10 Height above waterline with mast and antenna: 6.99 m (275 in)

4.11 Height above waterline with mast, without antenna: 5.56 m (219 in)

4.12 Height above waterline without mast: 3.68 m (145 in)

- 4.13 Deadrise (Angle at Amidships): 23 deg
- 4.14 Draft, Light: 0.74m (29 in)
- 4.15 Draft, Loaded: 0.81 m (32 in)
- 4.16 Displacement, Light: 11,800 kg (25960lb)
- 4.17 Displacement Loaded: 13,000 kg (28600lb)
- 4.18 Deadweight (Total Carrying Capacity): 2000 kg (4408 lb)
- 4.19 Recommended Fuel: #2 Diesel
- 4.20 Fuel capacity: 1200 (316 gal) Approx 1000 kg (2200 lb)
- 4.21 Load Capacity (Including Persons): 1135 kg (2500 lb)
- 4.22 Complement: 2 Persons
- 4.23 Persons Capacity: 12 Persons
- 4.24 Cruising Speed : (2200 RPM) 20 knots.
- 4.25 Maximum Speed (2600 RPM): 30 knots.
- 4.26 Boat has foamed D-fender , and diving ladder.

4.27 Patrol boat-40 FT ship yard ,fully equipped with all electronics:

4.27.1 Eight (8) Deck flood lights .

4.27.2 Two (2) search lights jabsco 7”.

4.27.3 Two (2) VHF Furuno FM-2721.

4.27.4 Two (2) Nav net 3D Furuno MFD12.

4.27.5 AIS - FA-150 Furuno .

4.27.6 Depth Sounder Furuno DFF1

4.27.7 Precision fluxgate heading sensor PG-500

4.27.8 Remote display unit RD-30.

4.27.9 Three (3) A/C Cruisar SXR12C.

4.27.10 Two (2) Chargermaster Mastervolt

4.27.11 UltraSonic Antifouling ultra 10.

4.27.12 Fireboy system & Fire Alarm Heat Detector

4.27.13 Carbon Monoxide Detector

4.27.14 Five (5) Bilge pump Auto system.

4.27.15 Two (2) Manual Bilge pump

4.27.16 The boat includes a fly bridge which is not installed on the boat but matches it .There is an option to add the fly bridge which includes: weal system , throttles , control panel for the motor and the jets ,indicator gauge , compass and navigation system.

5. Warranty:

5.1 The boat is for sale in its current condition AS IS and without any warranty from the Israeli Police for the boats quality or for its standard functioning and for the equipment installed accompanying it.

6. Examination of the equipment:

6.1 Bidders are allowed to schedule a visit in the police's warehouses to check the boat and its accompanying equipment in storage condition.

6.2 The highest bidder who meets all the bid requirements, will be able to test the boat and perform sea trials. (after payment of 10% of his offer)

7. Supply:

7.1 The Israeli Police will be responsible to transport the boat in order to perform sea trials.

7.2 The bid winner will be required to pick up the boat from the place the sea trials took place , and if he does not wish to perform sea trials then from the police warehouse in Jerusalem.

7.3 All work having to do with raising the boat and removing it from the police facility or from the sea trials location to the bid winner's facility , will be the bid winner's responsibility and at his expense.

Written By : Yuval Meshulam

Shipyard Commander Of Marine Police Unit

